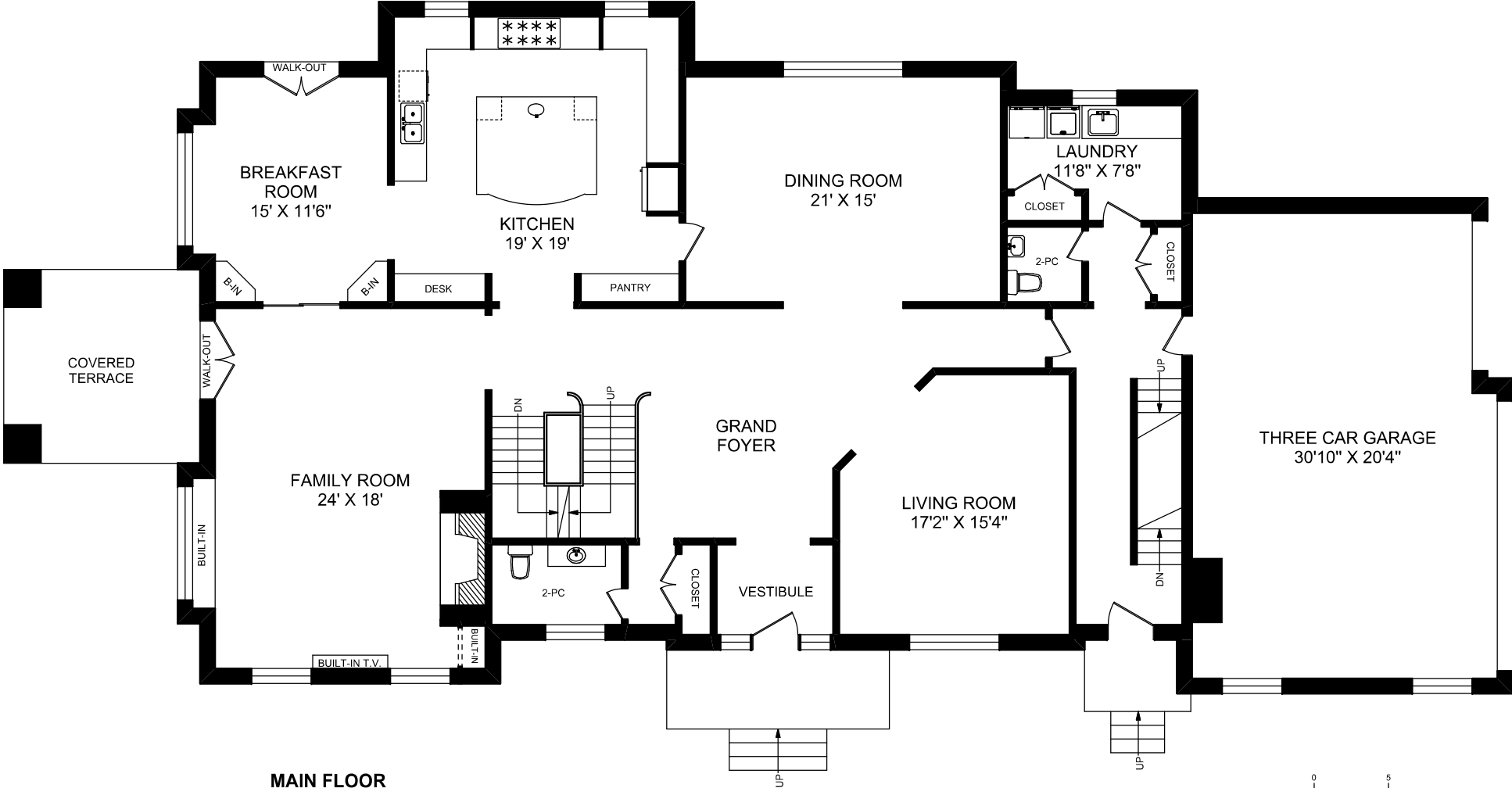


3 PLYMBRIDGE ROAD



MAIN FLOOR
2715 SQUARE FEET
+ GARAGE
692 SQUARE FEET

(CEILING HEIGHT : 10'-0")



truPlan
416 573 2096
E & O.E.

Floor plan may not be 100% accurate.

3 PLYMBRIDGE ROAD

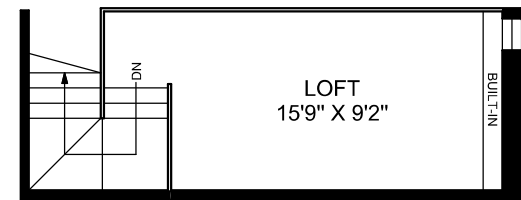


SECOND FLOOR
3283 SQUARE FEET
+
LOFT
188 SQUARE FEET

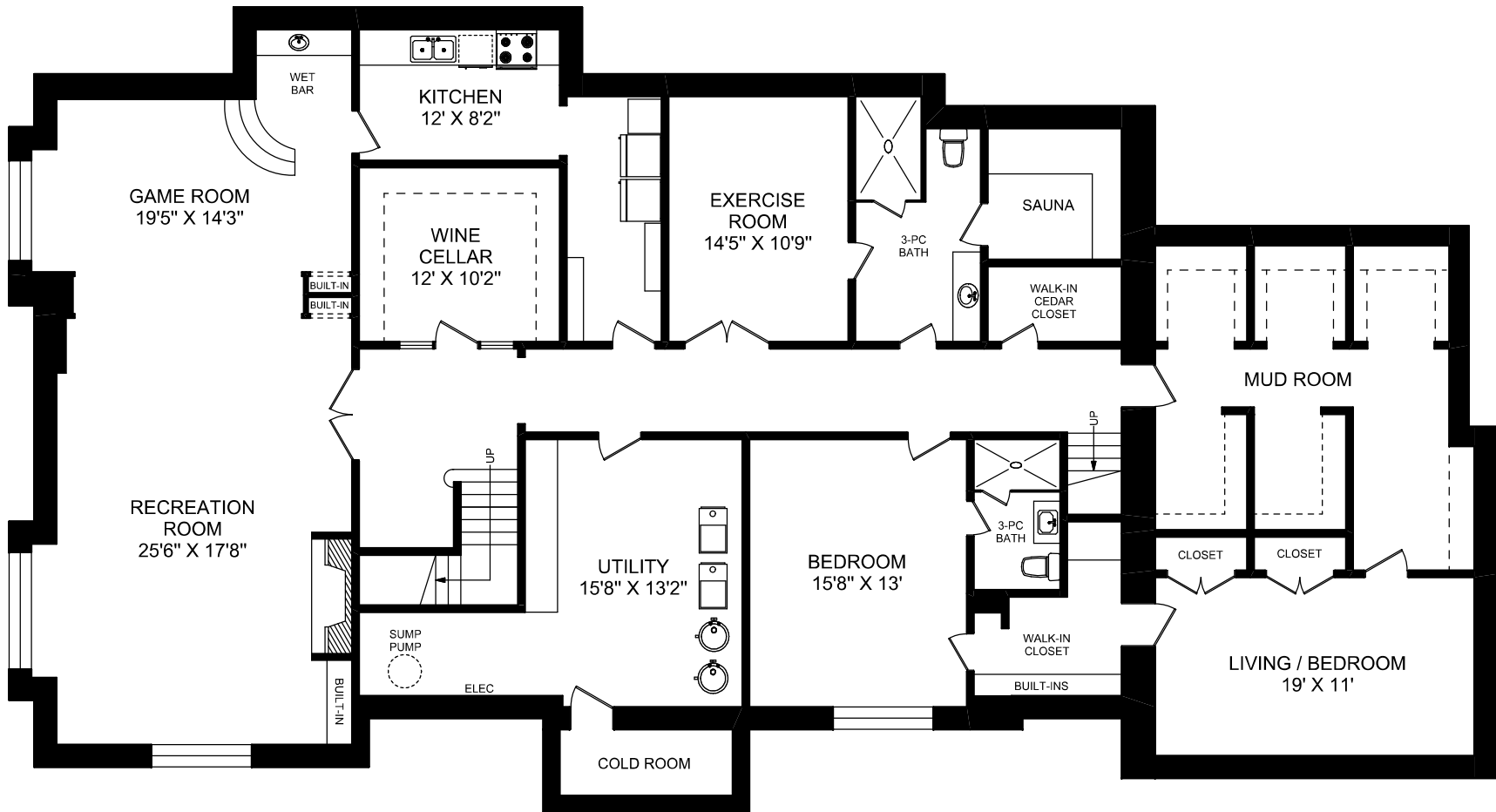
(CEILING HEIGHT : 9'-0")



truPlan
416 573 2096
E & O.E.
Floor plan may not be 100% accurate.

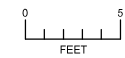


3 PLYMBRIDGE ROAD



LOWER LEVEL
3407 SQUARE FEET

(CEILING HEIGHT : 8'-10")



truPlan

416 573 2096

E & O.E.

Floor plan may not be 100% accurate.