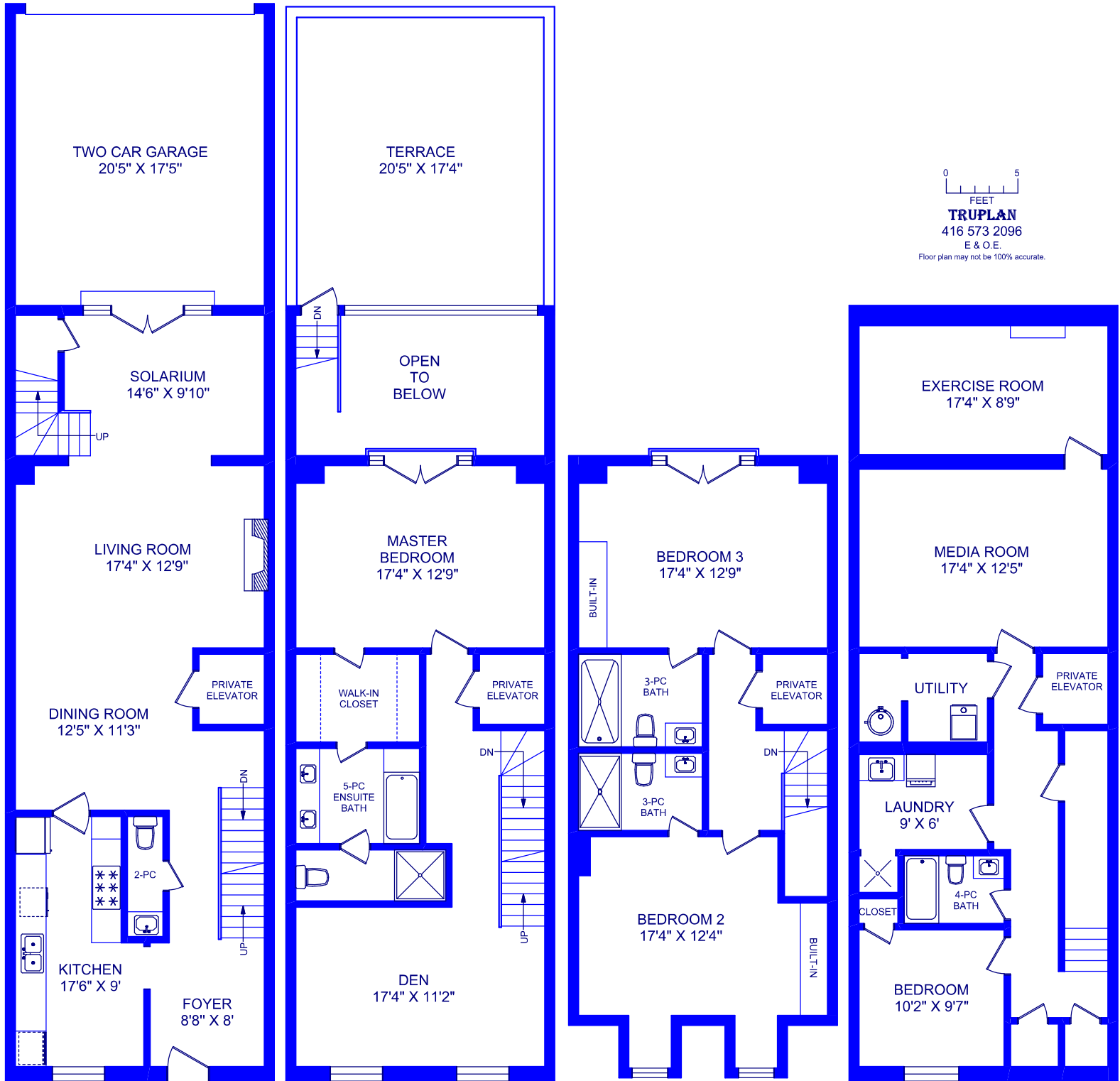


237 LYTTON BOULEVARD



TRUPLAN
416 573 2096
E & O.E.

Floor plan may not be 100% accurate.

MAIN FLOOR
1006 SQUARE FEET
(CEILING HEIGHT : 10'-6")

SECOND FLOOR
808 SQUARE FEET
(CEILING HEIGHT : 10'-6")

THIRD FLOOR
772 SQUARE FEET
(CEILING HEIGHT : 9'-0")

LOWER LEVEL
1006 SQUARE FEET
(CEILING HEIGHT : 9'-6")